

CERTIFICATE OF LOCATION OF GOVERNMENT CORNER

NORTH QUARTER Corner of Section 19, Township 106, Range 39, 5TH P.M.

STATE OF MINNESOTA, County of MURRAY

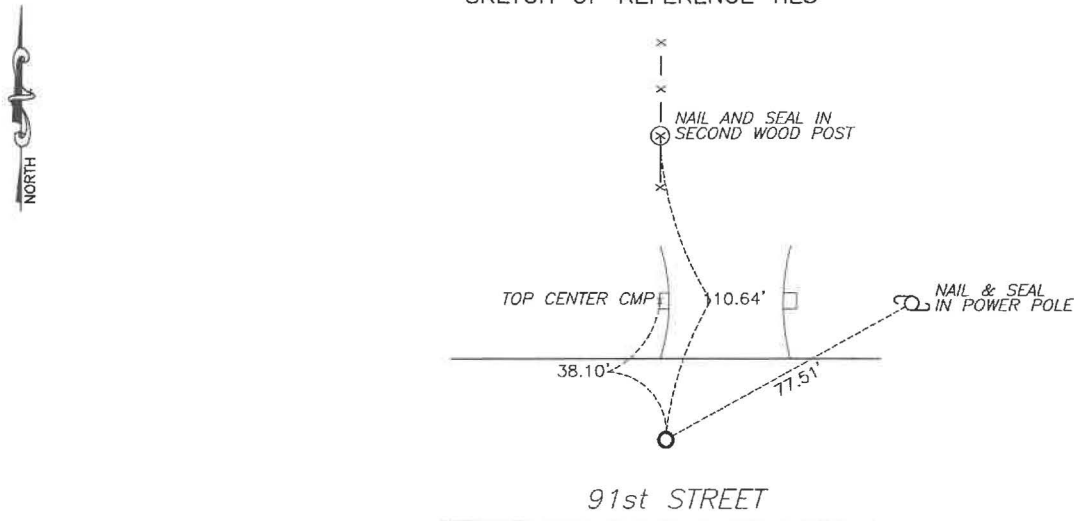
At the corner location shown on the sketch:

☒ On 6/28/2024 found a 3/4" iron above concrete monument
DATE

☒ left monument as found, ☐ lowered monument, ☐ removed monument (explain)

☐ On _____ placed a _____
DATE

SKETCH OF REFERENCE TIES



Murray County
Coordinate System NAD83 (1996)
N: 147657.332
E: 550887.633

WGS84
LAT: 43°58'43.0194"
LON: -95°34'24.1186"

Statement of evidence relative to this corner location is on back of page.

I hereby certify that this document and the data contained herein was prepared by me or under my direct supervision.

Daniel L. Buettel
License No. 43844

3/13/2025
DATE

MAR 13 2025

Karen Brown
MURRAY COUNTY RECORDER

Statement of Evidence

NORTH QUARTER CORNER SECTION 19, T106N, 39W OF THE 5th P.M.

In September 1858 W.J. Neely surveyed the east township line.

In July of 1861 J.W. Myers surveyed the north, south, and west township lines.

In August of 1861 Wellman & Smoot subdivided the township.

A survey by J.W. Woolstencroft dated May 19, 1898 notes a stone and mound for the corner.

Undated - a concrete monument was placed at the corner.

County records from 1940 shows a concrete monument found at the corner.

County records from 1965 shows a concrete monument found at the corner and a steel pin set above the concrete monument.

On June 28, 2024 Bueltel-Moseng Land Surveying found a $\frac{3}{4}$ " iron above a concrete monument.